

HK INSTRUMENTS

USER-FRIENDLY MEASURING DEVICES

NEW!

PASSIVE TEMPERATURE SENSORS FOR LIQUIDS

PTE-I

IMMERSION SENSOR

PTE-I immersion sensor is used to sense the liquid temperature in pipes in HVAC systems. PTE-I needs to be installed into an immersion pocket.

PTE-FI

FAST RESPONSE IMMERSION SENSOR

PTE-FI immersion sensor is used to sense the liquid temperature in pipes in HVAC systems. PTE-FI is a fast response immersion sensor for liquid applications where fast response time is needed.

PTE-SF

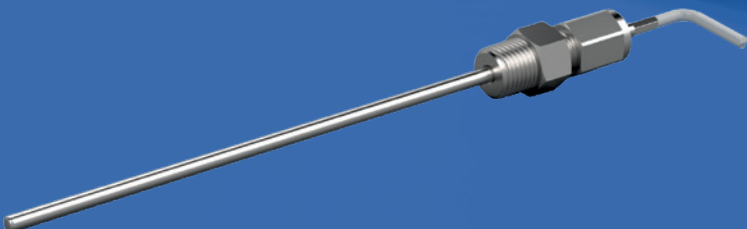
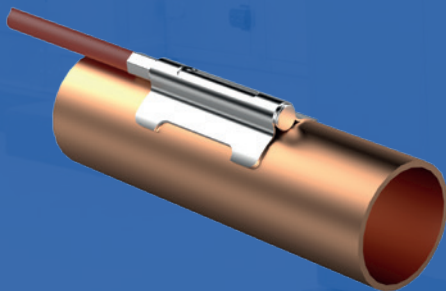
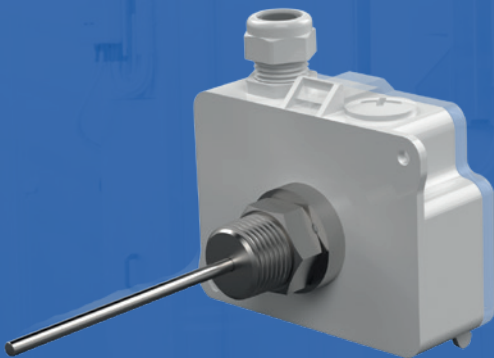
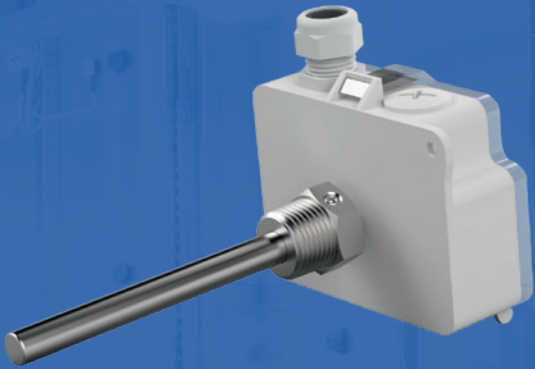
SURFACE SENSOR

PTE-SF surface sensor is used to sense the liquid temperature in pipes in HVAC systems. PTE-SF is easy to install and does not need immersion pocket to sense pipe temperature.

PTE-FG

FROST GUARD SENSOR

PTE-FG frost guard sensor is used to sense the liquid temperature in radiators and pipes in HVAC systems. PTE-FG is a fast response sensor for protecting radiators from freezing.



TECHNICAL DETAILS PTE-I

Operating temperature:	-50 ... +180 °C
Sensor tube length:	100 mm
Sensor tube outer diameter:	7 mm
Protection class:	IP54

TECHNICAL DETAILS PTE-FI

Operating temperature:	-50 ... +120 °C
Sensor tube length:	100 mm
Sensor tube outer diameter:	4 mm
Protection class:	IP54

TECHNICAL DETAILS PTE-SF

Operating temperature:	-60 ... +80 °C
Short-term temperature:	up to +150 °C
Materials:	Sleeve: Stainless steel Cable: Silicone rubber
Sleeve dimensions:	Outer diameter: 6 mm Length: 50 mm
Cable length:	2.0 m (Custom lengths available upon request)
Protection class:	IP67

TECHNICAL DETAILS PTE-FG

Operating temperature:	-50 ... +120 °C (sensor tube)
Materials:	Housing material: ABS Cover material: PC Sensor tube: acid-proof stainless steel
Dimensions:	Sensor tube outer diameter: 4 mm Sensor tube length: 200, 400 mm
Protection class:	IP54

PTE-I / PTE-FI

Example:	Product series		
PTE-I-NTC10	PTE	Passive temperature sensor for liquids	
PTE-FI-NTC10		Installation type	
		-I	Immersion
		-FI	Fast response immersion
		Sensor element	
		-NTC10	10 KΩ @ 25 °C
		-NTC20	20 KΩ @ 25 °C
		-Pt1000	1000 Ω @ 0 °C
		-Ni1000	1000 Ω @ 0 °C
		-Ni1000-LG	1000 Ω @ 0 °C
		-NTC1.8k	1.8 KΩ @ 25 °C
Model	PTE	-I	-NTC10
	PTE	-FI	-NTC10

PTE-SF / PTE-FG

Example:	Product series		
PTE-SF-NTC10	PTE	Passive temperature sensor for liquids	
PTE-FG-NTC10		Installation type	
		-SF	Surface (strap-on)
		-FG	Frost guard
		Sensor element	
		-NTC10	10 KΩ @ 25 °C
		-NTC20	20 KΩ @ 25 °C
		-Pt1000	1000 Ω @ 0 °C
		-Ni1000	1000 Ω @ 0 °C
		-Ni1000-LG	1000 Ω @ 0 °C
		NTC1.8k	1.8 KΩ @ 25 °C
Model	PTE	-SF	-NTC10
	PTE	-FG	-NTC10

EASY TO INSTALL EVEN IN NARROW SPACES BECAUSE OF THE L-BEND



HK INSTRUMENTS

Keihästie 7
FIN-40950 MUURAME
FINLAND

Phone. +358 14 337 2000
Fax. +358 14 337 2020
info@hkinstruments.fi
www.hkinstruments.fi